

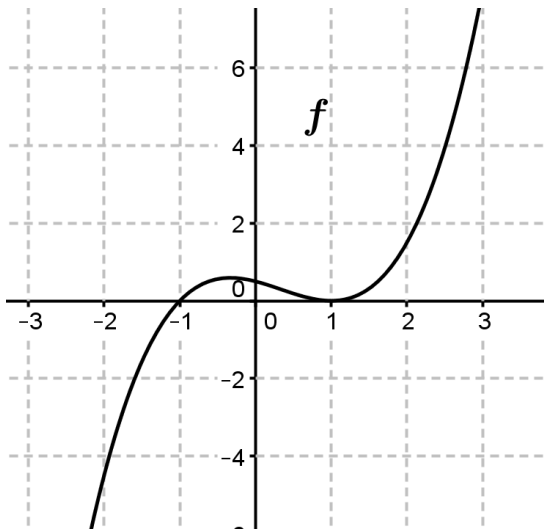
Polynomials 4 – Symbolic Representation from a Graph
Homework #8

Name _____
 Per _____ Date _____

Determine the possible symbolic representation for each of the polynomial functions whose graphs are provided below.

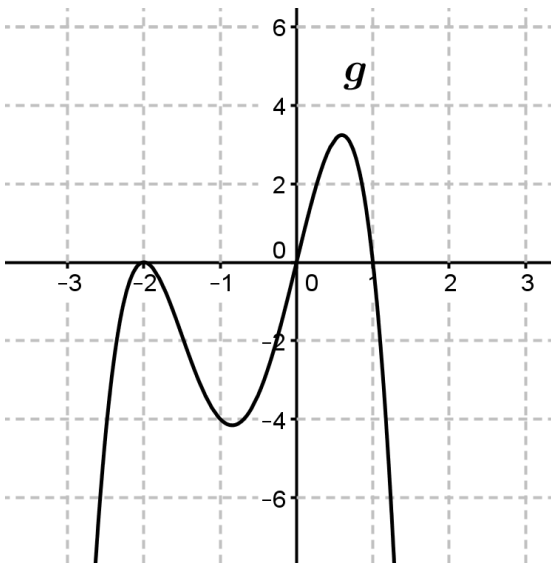
- Check your answers to ensure the functions match the graphs at the intercepts and end-behavior.

1.



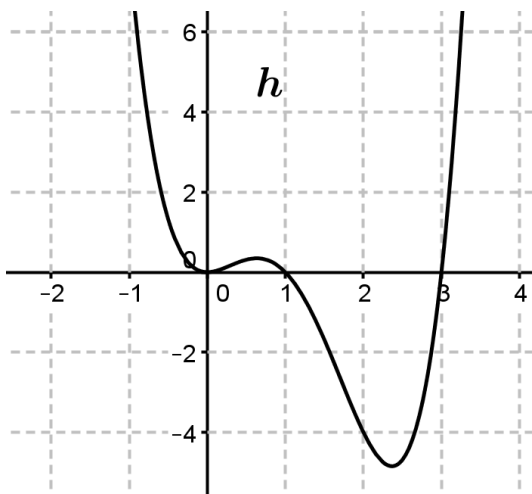
$f(x) =$ _____

2.



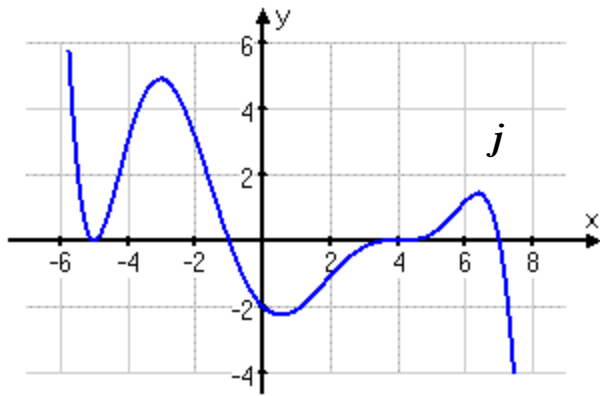
$g(x) =$ _____

3.



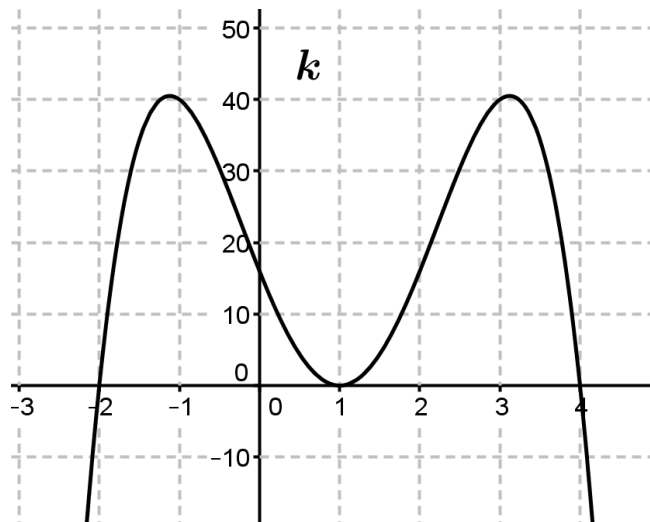
$h(x) =$ _____

4.



$j(x) =$ _____

5. Which of the following statements must be true about the polynomial function k , whose graph is given? Mark each statement true (T) or false (F).



A. _____ $(x - 2)$ is a factor of k B. _____ $(x - 1)$ is a factor of k

C. _____ $k(-2) = 4$ D. _____ $k(4) = 0$

E. _____ $(x - 1)$ is a repeated factor of k , with even multiplicity

F. Find the possible symbolic representation: $k(x) =$ _____